

EN

# USER'S MANUAL / WARRANTY CARD PARADE & PARADE LOW



COMPLETE YOUR HOME...

**Alukov**<sup>®</sup>

## Dear Customer of ALUKOV a.s. / IPC TEAM,

Thank you for buying our product manufactured under the name PARADE LOW or PARADE. We believe that our product will meet all your requirements and expectations.

To ensure that the enclosure works correctly we recommend professional installation, operation and maintenance following the enclosed User's Manual. Keep the User's Manual / Warranty Card in a safe place. ALUKOV a.s. keeps upgrading its products by using new materials and applying the latest developments trends within the field. The quality of our products is checked and certified by professionals in the area of quality control ISO 9001, environment ISO 14001.

We hope you enjoy relaxing and bathing in your covered swimming pool.

**ALUKOV a.s.**  
**Manufacturer of Enclosures**

**INTER POOL COVER TEAM, E.E.I.G.**  
**The World's Most Famous Swimming Pool Enclosures**

## Swimming pool enclosures

### Content:




Technical Description	2
Operation and Maintenance	3
Warranty terms	5
Spare parts	6
Complaints Procedure	9

### Important warning:

If case that product is delivered without immediate installation, it is necessary to store enclosure in a reinforced and wind-protected place.

It is also necessary to secure the enclosure against wind with securing straps and cover with a UV-stable tarpaulin against debris, scratches and sunshine. Protection foil could get stuck on polycarbonate, in this case the product is not covered by warranty.

### Key to symbols:

-  ... warning symbols indicate possible health hazards
-  ... symbols indicate possible dangers
-  ... tip provides useful advice and additional information

The manufacturer reserves the right to make technical modifications to the product.

### Technical Description of Swimming Pool Enclosures:

Pool enclosures PARADE LOW or PARADE are especially developed only for covering of garden family swimming pools. Telescopic pool enclosures are not designed for covering of swimming pools for year-round use.

The enclosure protects the water against pollution and thus reduces the need to clean the swimming pool. At the same time it warms the water free of charge. The enclosure also secures the swimming pool against unsupervised children or pets entering the water.

The swimming pool enclosure consists of a system of mobile segments with an arched or partially arched shape. The structure of the swimming pool enclosure is made of special aluminium sections, which become stronger when curved to the needed radius. The panelling of the segments is made of hollow or compact polycarbonate, which is shaped into curved sections, and thus the shaped polycarbonate also strengthens the structure of the segments. The enclosure is designed especially for private family swimming pools, and can be operated by any trained member of the family. The product is easy to operate and maintain. Most of the segments of the enclosure can be shifted by a single adult. Always pay attention on safety of people in the vicinity of the swimming pool!

## Used materials:

### SECTIONS

Aluminium alloy AlMgSi 0.5 F 22

Standard: EN-AW-6063 T6, EN-AW-6060 T6 section strength within the range 180 - 250 N/MPa

Surface finish: natural anodizing C-0 layer 15-20 µm (applicable just for guide leading lines), anthracite powder paint - special finish DB 703, silver powder paint RAL 9006

### POLYCARBONATE

Types of polycarbonate: 4 mm compact

Number of cells: compact (K)

Thermal insulation: K (4 mm) U = 5.5 W/m<sup>2</sup>K

Light permeability: (100% clear window glass): K (4 mm) = 87%

Colour: transparent

Operating temperature: from -40°C to +120°C

### CONNECTING MATERIAL

Stainless-steel screws and rivets - class A4, A2

Aluminium rivets

Stainless-steel high strength rivets

### SEALING ELEMENTS

Sealing brushes in the stainless-steel and the aluminium section

Sealing rubbers for polycarbonate of EPDM

Sealing sections between the segments made of thermoplastic and softened PVC, MULTIFLEX

### ADDITIONAL METAL ACCESSORIES

Stainless-steel latch plates, stainless-steel latch pegs, stainless-steel lock fittings made of special alloy, aluminium adjustable and fixed corner connections, stainless-steel anchoring material, aluminium handles handrails, handles and pulleys.

### ADDITIONAL PLASTIC ACCESSORIES

Blind flanges of sections, plastic handrails, handles and pulleys, plastic clamps, plastic anchoring material.

## USER GUIDE

The enclosure may only be handled by persons acquainted with this User's Manual. The manufacturer supplies the enclosure partially assembled. Attachment of the enclosure to the swimming pool body or to its decking, anchoring onto firm and even surfaces, the assembly and adjustment of the enclosure should only be performed by employees of the manufacturing plant or other employees authorised and trained by the manufacturing plant.

### Securing the front wall

- Unlocking the front walls – Instructions – Appendix 1A
- Locking the front walls – Instructions – Appendix 1B

### Handling the segments

The segments of the enclosure must be handled with care and with respect to other people in the vicinity. The individual segments should be shifted slowly. Before locking into the latch point, slow down and push the latch of the segment lightly above the point of latch - Rough handling could damage the latch elements on the segments.

- Manually unlocking the segment latches – Instructions – Appendix 2A
- Manually locking the segment latches – Instructions – Appendix 2B

Complaints concerning defects caused by rough handling will not be accepted.

## WARNING:

Swimming pool enclosure PARADE LOW is always supplied without the possibility of having an entrance door to the pool. This is due to its low height. This type of enclosure is not intended for use in a closed position.

### Precautions for safe operation of swimming pool enclosures from the view of weather effects:

The individual segments are equipped with stainless-steel latches to prevent them from slipping out of their runners or possibly flying off. The front walls are equipped with latches. These latches elements are fixedly attached to the structure of the enclosure.

To prevent damage caused by wind, follow the instructions below:

- set and secure the front walls
- use all the latches to fix the swimming pool enclosure in place (plug in the latch plugs for the front walls, lower the segment latches to the active position and make sure that they work properly, carefully plug in and secure the safety pins in their counterpieces, close and secure or lock the door and other entrances in the enclosure)
- in cases of strong wind, do not run the segments over the swimming pool enclosure and do not open the door or handle of other movable parts
- prevent people from entering or going near the swimming pool enclosure
- the manufacturer only ensures the resistance of the product to a wind speed of up to 100 km/h\* if all the above listed conditions are observed (with higher wind speeds, it is necessary to consult the manufacturer about extra security measures)

To prevent damage caused by overloading segments, follow the instructions below:

- ⚡ do not place any foreign objects on the segments
- ! • **clean snow from the surface of the swimming pool enclosure**
- prevent people from treading on the segments of the swimming pool enclosure

⚡ All our types of swimming pool enclosure can be covered for a short time by a maximum layer of 5 cm of fresh snow. However, snow has to be removed regularly. The weight of wet mature snow is several times higher than that of fresh snow. Snow must be removed gradually in small portions, preferably symmetrically and simultaneously from both sides, so that the structure is not loaded on one side, before removing the snow layer from both sides of the enclosure.

When the construction is loaded with snow or other things, it is strictly forbidden to enter the swimming pool enclosure.

- ⚡ For additional information about the load-bearing capacity of your swimming pool enclosure please contact the manufacturer of the enclosure - see the contact data on the back page of this Manual.



**Other possibilities for operating swimming pool enclosures in winter conditions (consult the manufacturer):**

- moderate heating of the swimming pool - the snow on the surface of the enclosure melts
- ⚡ • if it is not possible to remove snow regularly, the manufacturer recommends, after the end of the bathing season, that the segments of the enclosure should be stacked on top of one another and secured.

Handling the parts of the swimming pool enclosures and sliding the segments must be done with special care so as not to harm people in the vicinity of the swimming pool enclosure and to prevent damage to the enclosure or the property of others.



**Maintenance of the swimming pool enclosure:**

- clean the surface of the enclosure (be careful when cleaning the surface of polycarbonate which is easily scratched)
- clean the travel paths of the enclosure and remove any foreign objects
- ⚡ • grease the door hinges and closing mechanisms (twice a year) !!Avoid touch of oil with polycarbonate!!
- ⚡ • grease the locks e.g. with silicone oil (twice a year) !!Avoid touch of oil with polycarbonate!!
- rinse the enclosure with running water containing a disinfectant (twice a year)
- ! • if water accumulates in the polycarbonate cells, remove the plastic covers from the travel profiles, check for and remove any dirt from the sewage duct of the travel profile



**General Advice and Recommendations:**

- wash aluminium profiles and polycarbonate with a solution of detergent. After rinsing with running water
- the sections should be cleaned with a sponge or fine brush; make sure that they do not contain any small impurities such as sand. When cleaning the polycarbonate panels, we recommend using a pressure cleaner (do not clean the polycarbonate when it is dry and warm from the sun)
- do not use sharp tools to clean the swimming pool enclosure
- do not use abrasive cleaners for cleaning the section surfaces or the polycarbonate, as they may scratch on the polycarbonate surface. It is also forbidden to use agents containing benzol, benzene, acetone or other organic solvents
- after applying body creams (sun cream or moisturiser), extra care should be taken when handling the enclosure, otherwise permanent damage to the polycarbonate may occur as a result of the caustic action of the ingredients contained in the creams
- gradually remove fresh snow from the surface of the swimming pool enclosure, to prevent any of partially melted snow from freezing
- do not leave the key in the lock for a long time, it will decrease the secure locking of the enclosure and could lead to the possible damage of the internal mechanism of the lock
- ask your pool supplier about the maximum permissible water temperature in the pool. Regular ventilation will prevent the pool water from overheating and thus from damaging the material the pool is made of
- Carefully monitor pH levels in pool water. Recommended pH is 6.8 – 7.6. Failure to maintain this pH level can be harmful and may damage rust-proof parts
- Carefully monitor chlorine levels in pool water. Recommended CL level is 0.3 – 0.8 mg/l. Failure to maintain this chlorine level can be harmful and may damage rust-proof parts

The materials used are resistant to water and dampness. The difference in temperatures between the outdoor and indoor environment may cause moisture to condensate inside the swimming pool enclosures on the polycarbonate and aluminium sections; it is possible to partially prevent condensation by covering the water surface or by using a special polycarbonate with a NO DROP surface finish, where drops are replaced with an invisible film of water, which flows down to the ground in a compact surface. Condensation also occurs inside the polycarbonate cells. The polycarbonate is bedded in aluminium sections with sealing, which prevents water from flowing directly into the polycarbonate cells and enables condensation to flow out. Condensation of water in the swimming pool enclosure and in the polycarbonate cells does not prevent use of the enclosure or shorten its service life and cannot be the subject of a complaint.

High dampness and temperature inside the enclosure can be the cause of the growth of algae and fungi. We recommend careful mechanical cleaning of the vicinity of swimming pool using alkaline cleaners. After that treatment of the clean vicinity of the swimming pool with 0,5 - 1 % solution of Persteril (peracetic acid).

## Declaration of Conformity

The product complies with the Declaration of Conformity according to ČSN EN ISO/IEC 17050 – 1

Dear Customer,

Thank you for choosing our product manufactured under the name PARADE LOW or PARADE. ALUKOV a.s. guarantees the service of the product you have bought during the entire warranty period. In your own interest we advise you to keep this accompanying booklet in a safe place for the entire warranty period of the product.

### WARRANTY TERMS

1. ALUKOV a.s. / IPC TEAM provides 2-year warranty for product functionality, starting on the date when the enclosure is handed over to the customer. The manufacturer writes the date of handover in the warranty card. The warranty covers faults which may occur during the warranty period as a result of material defects or an error in the manufacturing process.

2. ALUKOV a.s. / IPC TEAM provides a 10-year warranty for the single-cell and compact polycarbonate within the scope specified below by the polycarbonate manufacturer.

#### Scope of Warranty of polycarbonate board:

- light permeability will not deteriorate by more than 4% over 10 years
- the rigidity of the polycarbonate board will have  $\geq 2.100$  MPa flexibility module after 10 years
- the polycarbonate will not become brittle and will not lose its firmness After 10 years the tensile strength will be  $\geq 50$  MPa
- the polycarbonate will not be destroyed by hailstorms for at least 10 years

#### Terms of the polycarbonate board warranty:

- must not be negatively affected by coupling, fastening or sealing materials
- must not be thermally shaped
- can be exposed to weather effects on the UV side only
- the technological procedures of ALUKOV a.s. / IPC TEAM fully conform to these conditions of the polycarbonate board manufacturer
- must be protected against corrosive chemicals
- must not be mechanically damaged or abraded

3. When claim is filed under the warranty, the properly completed warranty certificate must be submitted.

4. The date on which the warranty claim was submitted, the date on which the enclosure is taken over for repair and the date on which the enclosure is returned after the repair shall be marked in the warranty certificate by the manufacturing plant.

5. Warranty repairs may only be performed by workers of the company ALUKOV a.s. / IPC TEAM or by trained employees of other sales and assembly firms.

6. All users are obliged to use the pool enclosures in accordance with Service Instructions given below.

#### Expiry of warranty / Exclusions from warranty:

1. Warranty claims cease to be valid after the expiry of the warranty term.

2. The warranty does not cover damage caused by improper use and unauthorized maintenance.

3. The warranty does not cover damage caused by unauthorized assembly executed by unauthorized staff.

4. The warranty does not cover damage caused by external factors, e.g. natural phenomena (overloading caused by a snow layer, hailstones bigger than 2 cm on average, wind speeds of higher than 100 km/hr) or to mechanical damage caused by a third parties.

5. The warranty becomes invalid upon unauthorized adaptation or repairs performed outside of the manufacturing plant, and also by any breach of the warranty terms.

6. The warranty does not cover adequate wear and tear caused by normal use, or damage caused by rough or improper handling.

7. The warranty does not cover oxidization of the surface of stainless and aluminium materials due to exceeding the recommended pH values, free and bound chlorine in the pool water.

8. The warranty does not cover non-standard environmental conditions.

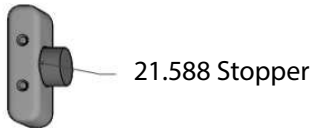
9. Warranty does not cover the build-up of condensate inside polycarbonate panel cells.



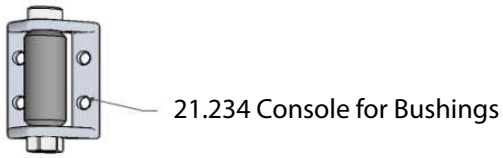
The financial risks resulting from damage to the pool enclosure can be reduced by taking out insurance against damages caused by extraordinary weather conditions.



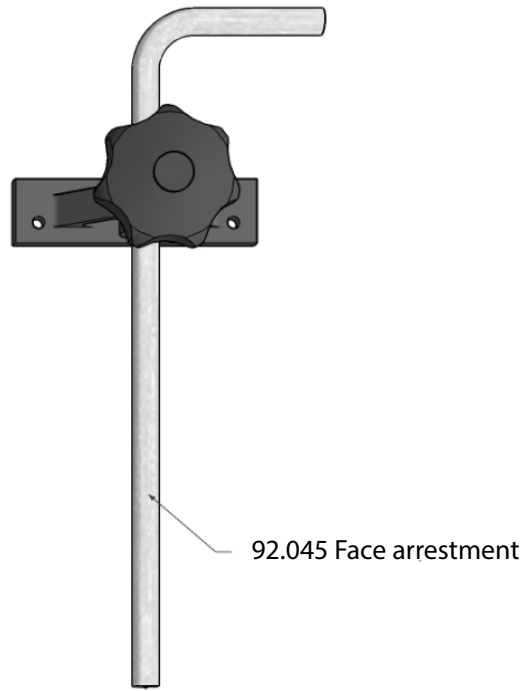
21.587 Stopper



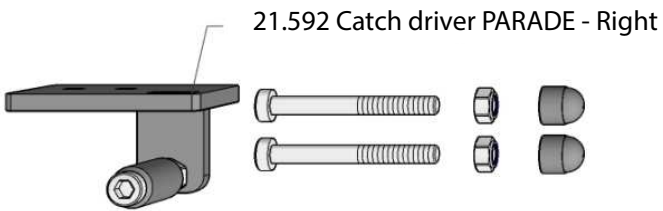
21.588 Stopper



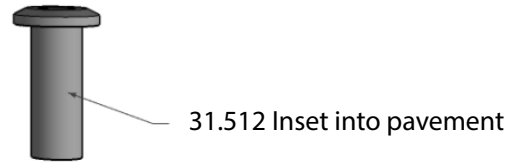
21.234 Console for Bushings



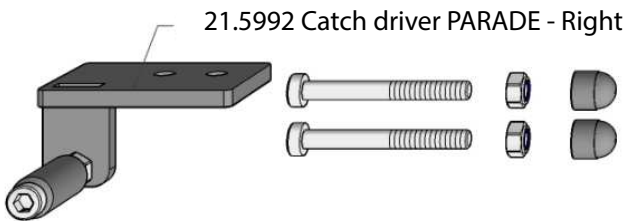
92.045 Face arrestment



21.592 Catch driver PARADE - Right



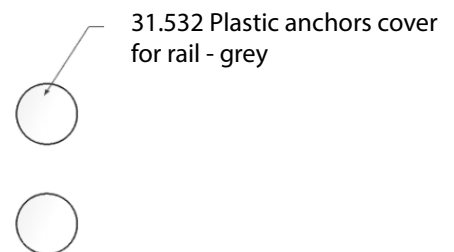
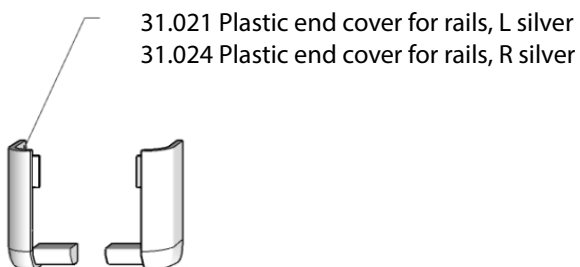
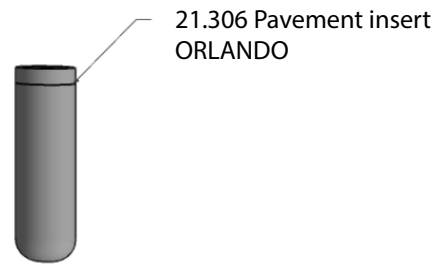
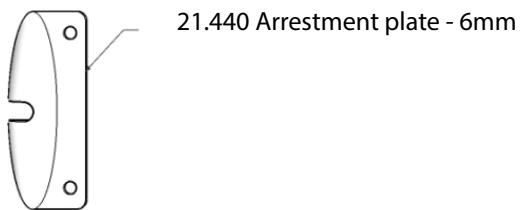
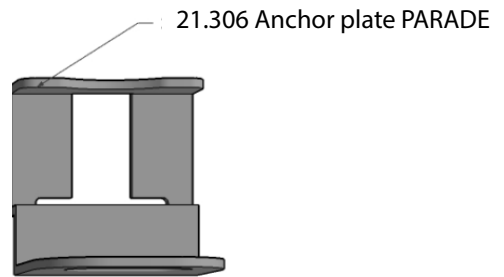
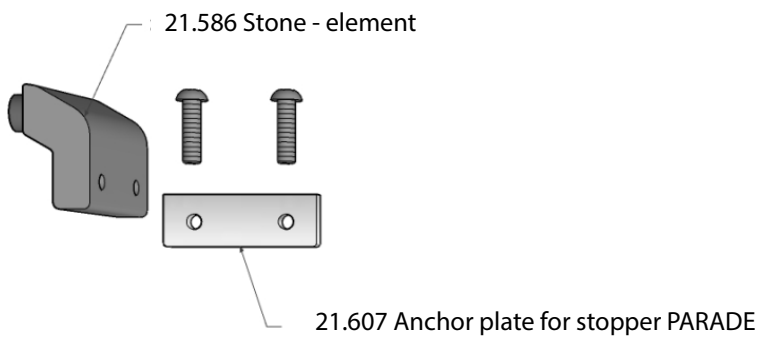
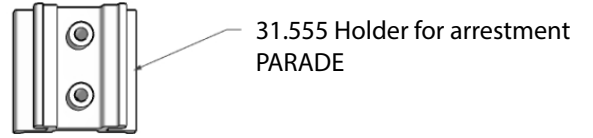
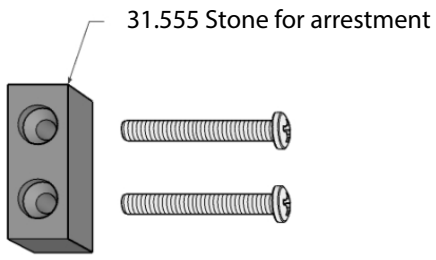
31.512 Inset into pavement



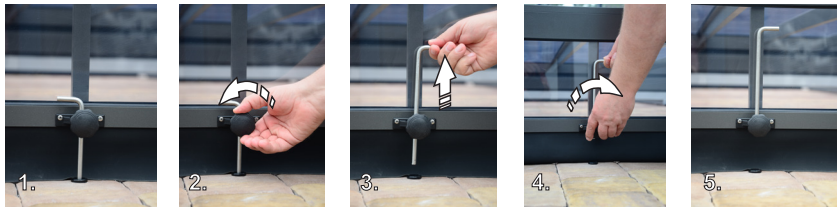
21.5992 Catch driver PARADE - Right



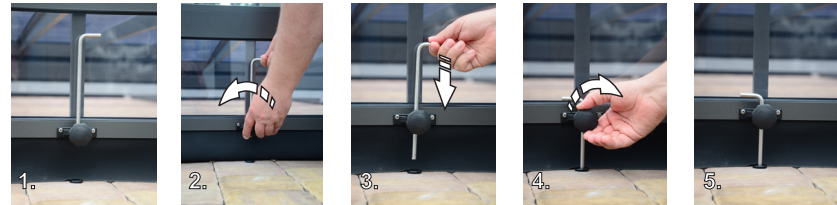
92.038 Safety anchor for doors ORLANDO



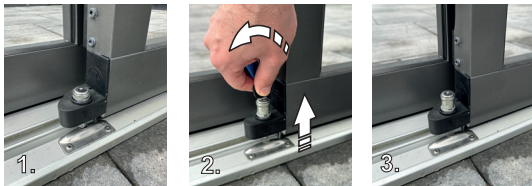
**Appendix 1A - Unlocking the front walls**



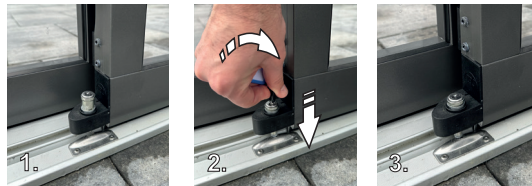
**Appendix 1B - Locking the front walls**



**Appendix 2A - Manually unlocking segment with key**



**Appendix 2B - Manually locking segment with key**



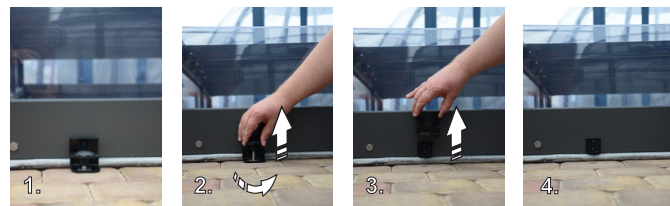
**Appendix 3A - Handgrip - use**



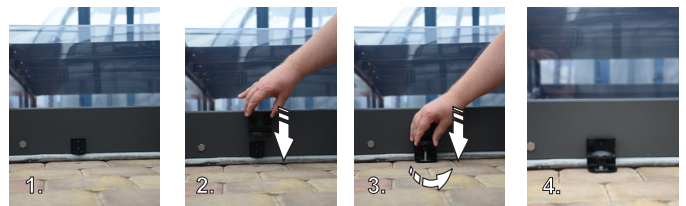
**Appendix 3B - Handgrip - storage**



**Appendix 4A - unlocking wind protection**



**Appendix 4A - locking wind protection**



## COMPLAINT PROCEDURE

Complaint rules of ALUKOV a.s. telescopic swimming pools, spa and patio enclosures.

Complaint rules of ALUKOV A.S. on telescopic swimming, spa and patio enclosures. This claim code was determined according to the applicable laws and applies to products made by ALUKOV A.S. and whose claims were claimed within the warranty period.

The seller warrants the product in the length indicated by the number of months. The warranty covers material defects, functional defects or defects caused by production that affects its functionality.

The seller provides basic warranty conditions or above-standard warranty conditions. Detailed information is provided in the guarantee certificate or in the annex Contract guarantee conditions.

### The guarantee does not cover in particular:

- Defects caused by improper use of the subject of the work, defects caused by mechanical damage, wear and tear, abrasion and scratching of moving mechanical parts of the enclosure (e.g. rails), defects resulting from the use of inappropriate cleaning agents and abrasive products
- Defects arising in connection with incorrect and poor quality building preparation and unstable geological subsoil. If the floor under the rails is not level, smooth the customer can face water leaking under the rails and end panels which is does not fall under warranty. On lean-to enclosures the warranty does not cover leakage of the rainwater if the wall is not even, level or has a harsh surface of the facade – ie. little stones . Unevenness of the facade in the range of up to +5 mm for every 2 m length and the roughness of the facade grain up to 3 mm can be sealed. For surfaces such as cladding, natural stone, uneven bricks etc where the surface difference is greater than the above limit, the water tightness of the connection wall (floor) and the rail cannot be guaranteed.
- For the water leakage between segments of the enclosure in the case of extremely strong wind with rain.
- Damage caused by improper installation or installation by unauthorized workers
- Color changes on profiles without surface treatment. Sections of profiles without surface treatment are subject to natural oxidation, which is manifested by darkening lightening of these areas. Especially places where the profile has been cut.
- On the oxidation of the surface of the raw stainless and aluminium material (connecting material) due to the exceedance of the recommended PH values in a range other than 7.2- 7.6 and free and bound chlorine in pool water worth more than 0.6 mg/L.
- Possible penetration of small impurities, dust, fungi, algae, plants and insects into the chambers polycarbonate filling, which can exceptionally occur through technological holes for moisture removal from the enclosure design.
- The formation of water condensate inside the chambers of polycarbonate sheets. Also for the formation of water condensate on the inner side of fillings, profiles of individual segments and the front wall of the enclosure.
- Deformation of profiles due to the freezing of water condensate in the internal chambers of profiles in connection with the heating of the pool in the winter period
- Damage resulting from inappropriate handling
- For non-standard environmental conditions in particular for the occurrence of algae and fungi in the joints of profiles and outlet openings of profiles
- Normal wear and tear and replacement of wearing parts. For this purpose, wearing parts are parts which, owing to their function and nature, are normally exchanged during their normal service life (e.g. sealing MPVC, EPDM foil, brushes, wheel and door castors, locks, hinges, locking elements, etc.)
- Damage to enclosure caused by elemental, natural forces (load with a snow layer greater than 15 cm, wind at a speed greater than 90 km/h, hail stones larger than 2 cm in diameter and speeds greater than 20m/s, etc.) and non-observance of the manufacturer's recommendations for the winter period, damages caused by a snow layers falling from a roof of a house or other building on the enclosure or mechanical damage caused by a third party
- If the polycarbonate sheet gets into contact with chemicals. See general advice and recommendations in the operating instructions
- If the polycarbonate sheet is scratched
- If the polycarbonate sheet was exposed to heat or was shaped by heat

Claims for complaints cannot be claimed if the buyer has not complied with the instructions in the complaint procedure and in the operating instructions. Warranty claims cease to apply in the Warranty period. The guarantee is terminated by unauthorised modification and repair carried out outside the factory, as well as by non-observance of the guarantee conditions.

You will reduce the financial risk associated with damage to the pool, spa and patio enclosures by concluding the insurance contract against damage caused by extraordinary effects caused by climatic influences.

**WARNING:** Swimming pool enclosure PARADE LOW is always supplied without the possibility of having an entrance door to the pool.

#### Terms & Conditions:

The warranty is provided by Alukov a.s. To see the full extend, please read Terms of Warranty. The start of the warranty period will be marked in the Warranty Certificate. This Certificate is integral part of the Owner's Manual, which is handed over to the customer on the date of delivery. The customer understands that due to the nature of the product, it may occur after its repair to minor aesthetic changes that do not affect the overall quality and functionality.

#### When applying for a warranty claim, ALUKOV a.s. proceeds according to the following conditions:

The acknowledged claim will be dealt with by a professional repair in the event of a defect, without prejudice to the buyer's right to be held responsible for defects under Act no. 89/2012 Coll., The Civil Code, as amended the buyer is obliged to claim the claim as soon as the product defect has occurred. Notifications of defects discovered must be made in writing by the purchaser deliver it to the manufacturer's address or send it by e-mail. Contact office:

ALUKOV a.s.  
Orel 18, Slatiňany 538 21, Czech Republic  
Tel.: +420 469 681 488  
Fax: +420 469 681 321  
E-mail: info@alukov.cz

It is necessary to state what defects it is and how it is manifested and the claim that it claims due to the occurrence of defects.

The eligibility of each claim and the assessment of the defect or irremovability of the defect shall be made by the seller's professional officer and his / her opinion will inform the buyer. If the advertiser disagrees with the decision of the responsible employee, he / she may write to the company's sales manager the seller or, where appropriate, the forensic expert. Costs associated with the repair or replacement of the parts and components of the product after the warranty period has elapsed since its takeover, in particular the associated construction costs, costs for transportation and assembly, go to the buyer (customer)

Appropriate repairs will be carried out in the shortest possible time so that the functionality of the product is minimally disturbed. However, the time-limit for correction may exceptionally be extended,

if it is dependent on the delivery date of some components and parts to be ordered from the manufacturer or if the item to be dispatched is to be dispatched repair to the manufacturer, or repair can not be done due to existing climatic conditions.

Warranty repairs may only be performed by ALUKOV a.s. or trained employees of other sales and assembly companies.

if the buyer (customer) took over the product only after the day on which he was obliged to take over the product, the warranty period shall run from the date on which he was obliged to take over the product. If goods or services are exchanged its parts, the warranty period begins to run again from the date of receipt of the new goods or parts thereof.

The Warranty Certificate must be submitted to claim the claim

Liability for defects in goods for which the warranty period is valid shall lapse if it has not been exercised in the warranty period in a demonstrable manner - written form.

ALUKOV a.s.  
26.02.2024

**ALUKOV a.s.**

Orel 18, Slatiňany 538 21, Czech Republic



Tel.: +420 469 681 488

Fax: +420 469 681 321

E-mail: [info@alukov.cz](mailto:info@alukov.cz)

[www.alukov.com](http://www.alukov.com)

COMPLETE YOUR HOME...

Member of

